



**India Meteorological Department
(Ministry of Earth Sciences)**

National Bulletin No. 33 (ARB/02/2025)

TIME OF ISSUE: 0900 HOURS IST

DATED: 06.10.2025

FROM: INDIA METEOROLOGICAL DEPARTMENT (FAX NO. 24643965/24699216/24623220)
TO: CONTROL ROOM, NDM, MINISTRY OF HOME AFFAIRS (FAX.NO. 23093750)
CONTROL ROOM NDMA (FAX.NO. 26701729)
CABINET SECRETARIAT (FAX.NO.23012284, 23018638)
PS TO HON'BLE MINISTER FOR S & T AND EARTH SCIENCES (FAX NO.23316745)
SECRETARY, MOES (FAX NO. 24629777)
H.Q. (INTEGRATED DEFENCE STAFF AND CDS) (FAX NO. 23005137/23005147)
D.G. INDIAN COAST GUARD: (FAX No. 011-23383196)
DIRECTOR GENERAL, DOORDARSHAN (23385843)
DIRECTOR GENERAL, AIR (23421105, 23421219)
PIB MOES (FAX NO. 23389042)
UNI (FAX NO. 23355841)
D.G. NATIONAL DISASTER RESPONSE FORCE (NDRF) (FAX NO. 26105912, 2436 3260)
DIRECTOR, PUNCTUALITY, INDIAN RAILWAYS (FAX NO. 23388503)
CHIEF SECRETARY, MAHARASHTRA (FAX NO. 022-22028594)
CHIEF SECRETARY, GUJARAT (FAX NO. 079-23250305)
CHIEF SECRETARY, GOA (FAX NO. 0832-2415201)
CHIEF SECRETARY, KARNATAKA (FAX NO. 080-22258913)
CHIEF SECRETARY, KERALA (FAX NO. 0471-2327176)
ADMINISTRATOR, DADRA & NAGAR HAVELI (FAX NO. 0260-2645466/ 22307000)
ADMINISTRATOR, DAMAN & DIU (FAX NO. 0260-2230775)
ADMINISTRATOR, LAKSHADWEEP (FAX NO. 04896- 268124)

Subject: Cyclonic Storm “Shakhti” [Pronunciation: Shakhti] over westcentral and adjoining northwest Arabian Sea

The severe cyclonic storm “Shakhti” [Pronunciation: Shakhti] over westcentral and adjoining northwest Arabian Sea moved nearly southwards with a speed of 5 kmph during last 6 hours, weakened into a Cyclonic Storm and lay centered at 0530 hrs IST of today, the 6th October, 2025 over the same region, near latitude 19.6°N and longitude 60.4°E, about 200 km southeast of Masirah (Oman), 310 km south- southeast of Ras Al Hadd (Oman), 910 km southwest of Karachi (Pakistan), 950 km west-southwest of Dwarka and 970 km west-southwest of Naliya.

It is likely to move east-southeastwards over westcentral & adjoining northwest Arabian Sea and weaken into a depression by the morning of 7th October.

Forecast location and intensity are given in following table:

Date/Time (IST)	Position (Lat. °N/ long. °E)	Maximum sustained surface wind speed (Kmph)	Category of cyclonic disturbance
06.10.25/0530	19.6/60.4	80-90 gusting to 100	Cyclonic Storm
06.10.25/1130	19.4/60.6	70-80 gusting to 90	Cyclonic Storm
06.10.25/1730	19.3/60.8	60-70 gusting to 80	Cyclonic Storm
06.10.25/2330	19.2/61.0	55-65 gusting to 75	Deep Depression
07.10.25/0530	19.1/61.2	45-55 gusting to 65	Depression
07.10.25/1730	18.9/61.7	25-35 gusting to 45	Well Marked Low Pressure Area

Wind warning:

- Gale wind speed reaching 80-90 kmph gusting to 100 kmph is prevailing over westcentral & adjoining northwest Arabian Sea. It would gradually decrease becoming squally wind with speed reaching 45-55 kmph gusting to 65 kmph by morning of 7th October and gradually reduce thereafter.

Sea condition:

- Sea condition is very likely to be high to very rough over Westcentral and adjoining northwest Arabian Sea till 7th October morning and improve thereafter.

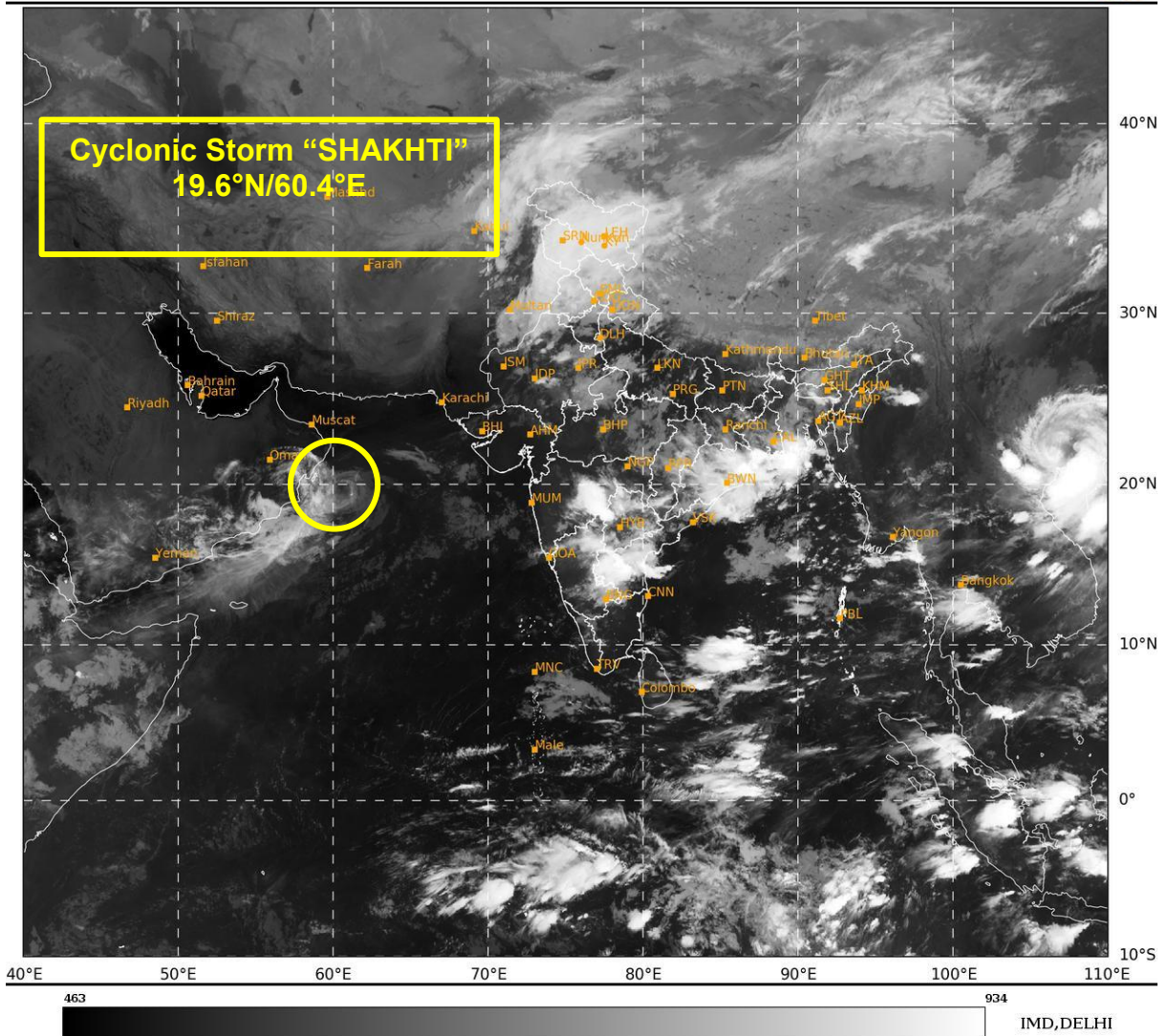
Fishermen warnings:

Fishermen are advised not to venture into Westcentral & adjoining Northwest Arabian Sea till 7th October

Next Bulletin will be issued at 1130 hrs IST of today, the 6th October, 2025.

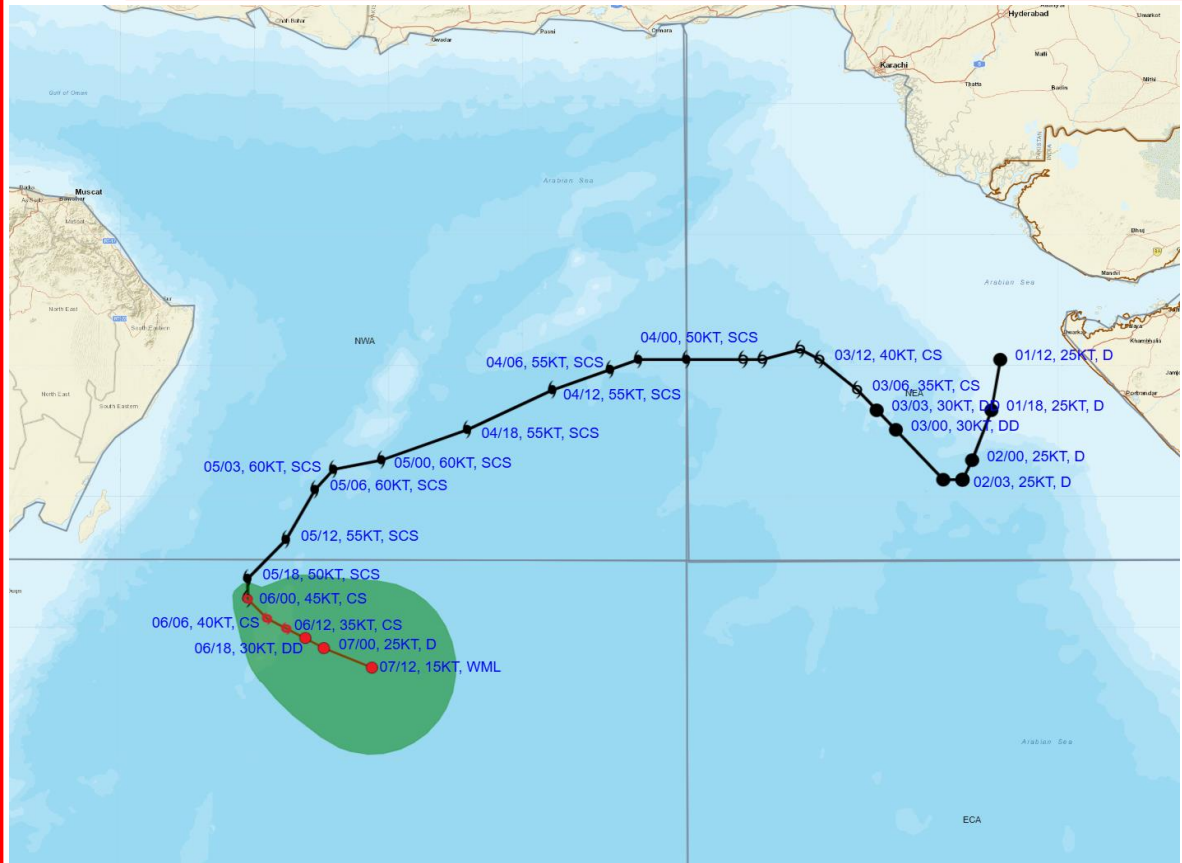
(Shibin Balakrishnan)
Scientist-D, IMD, New Delhi

*Copy to: ACWC Mumbai/ CWC Ahmedabad/CWC Thiruvananthapuram/Meteorological Centres
/Ahmedabad/Goa/Bengaluru/Aminidivi*





OBSERVED AND FORECAST TRACK OF CYCLONIC STORM 'SHAKHTI' OVER WESTCENTRAL AND ADJOINING NORTHWEST ARABIAN SEA BASED ON 0000 UTC (0530 IST) OF 6TH OCTOBER, 2025



DATE/TIME IN UTC

IST = UTC + 0530

L: LOW PRESSURE AREA

WML: WELL MARKED LOW PRESSURE AREA

D: DEPRESSION (17-27 KT)

DD: DEEP DEPRESSION (28-33 KT)

CS: CYCLONIC STORM (34-47 KT)

SCS: SEVERE CYCLONIC STORM (48-63 KT)

VSCS: VERY SEVERE CYCLONIC STORM (64-89 KT)

ESCS: EXTREMELY SEVERE CYCLONIC STORM (90-119 KT)

SuCS: SUPER CYCLONIC STORM ≥ 120 KT

1 KT = 1.85 KMPH



LESS THAN 34 KT



34-47 KT



≥ 48 KT



OBSERVED TRACK



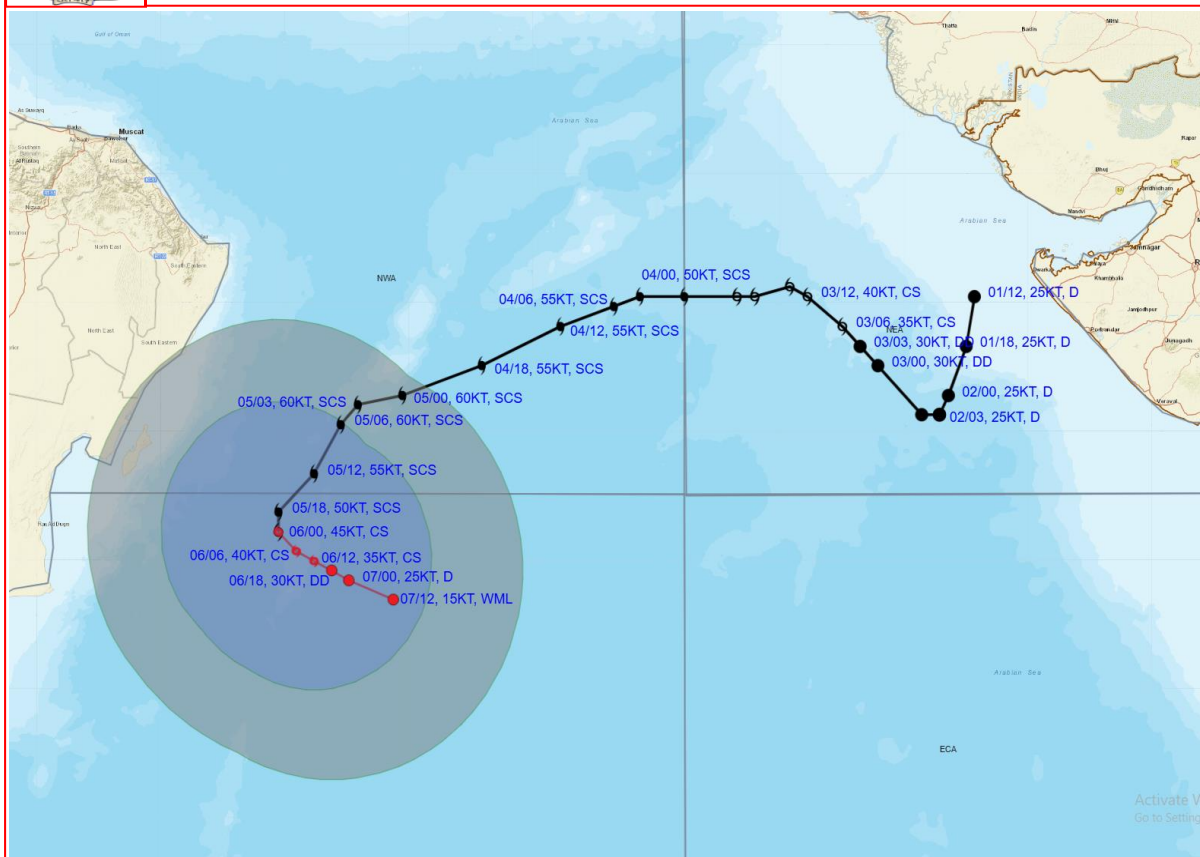
FORECAST TRACK



CONE OF UNCERTAINTY



OBSERVED AND FORECAST TRACK ALONGWITH QUADRANT WIND DISTRIBUTION OF CYCLONIC STORM 'SHAKHTI' OVER WESTCENTRAL AND ADJOINING NORTHWEST ARABIAN SEA BASED ON 0000 UTC (0530 IST) OF 6TH OCTOBER, 2025



DATE/TIME IN UTC
IST = UTC + 0530

1 KT = 1.85 KMPH

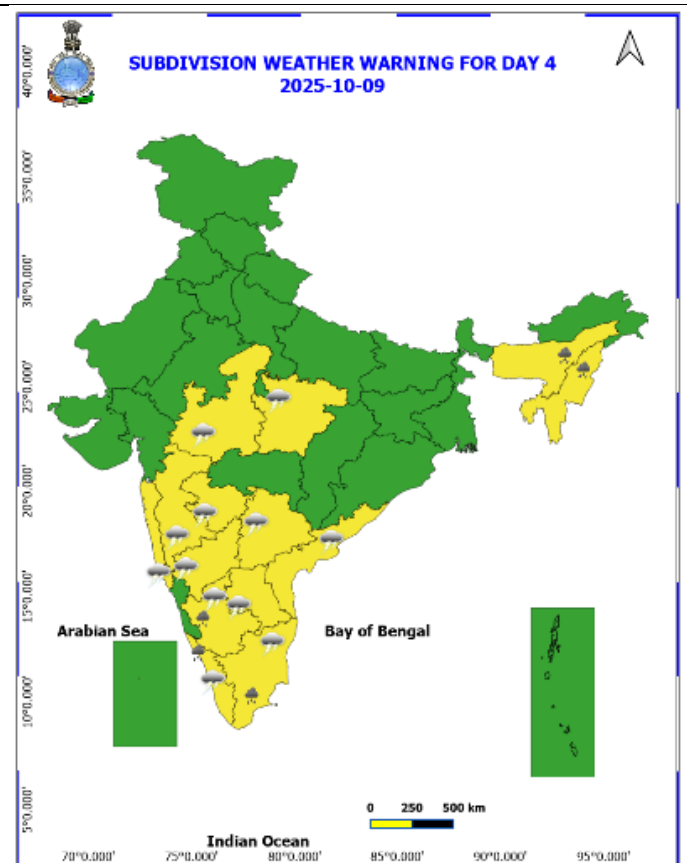
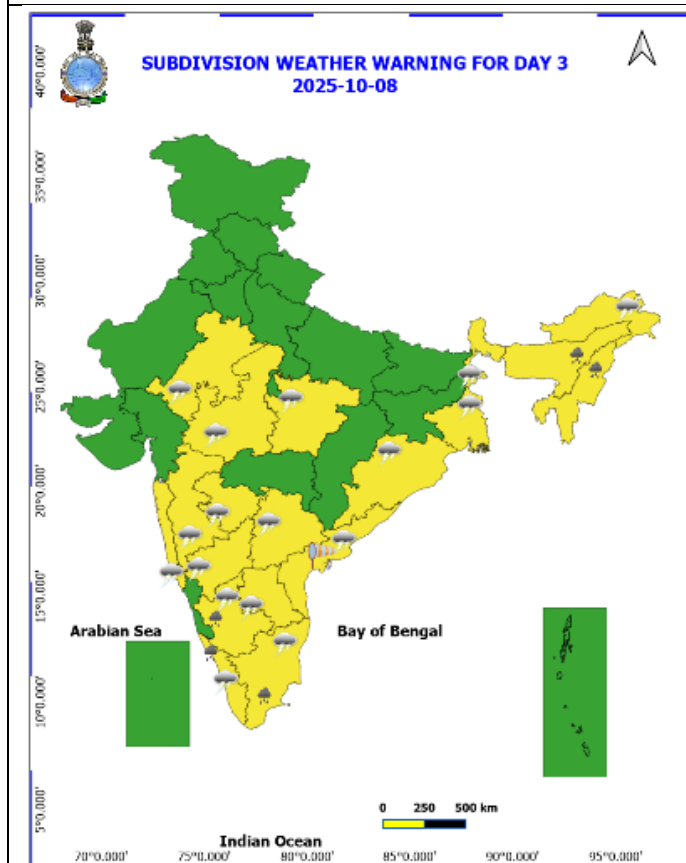
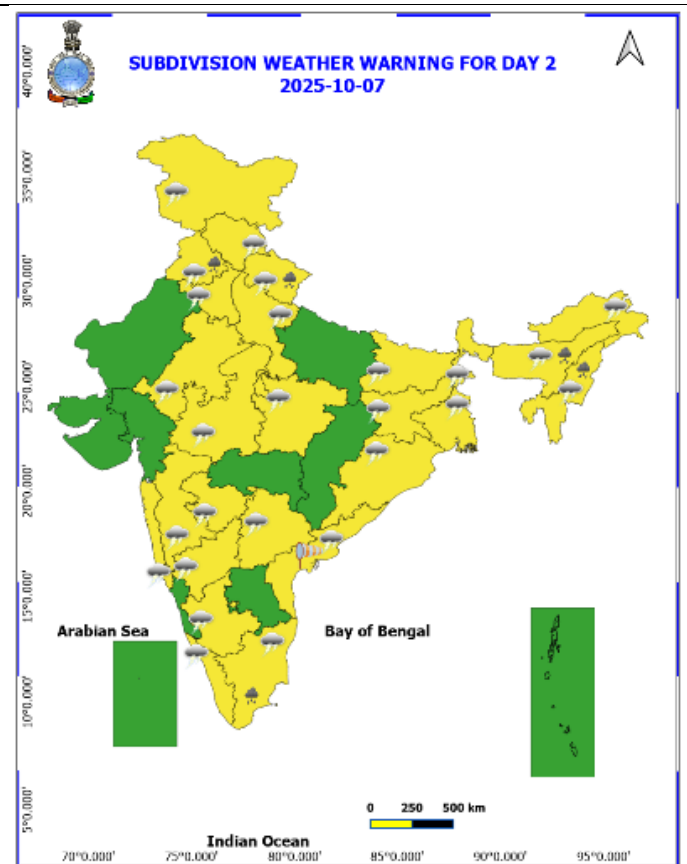
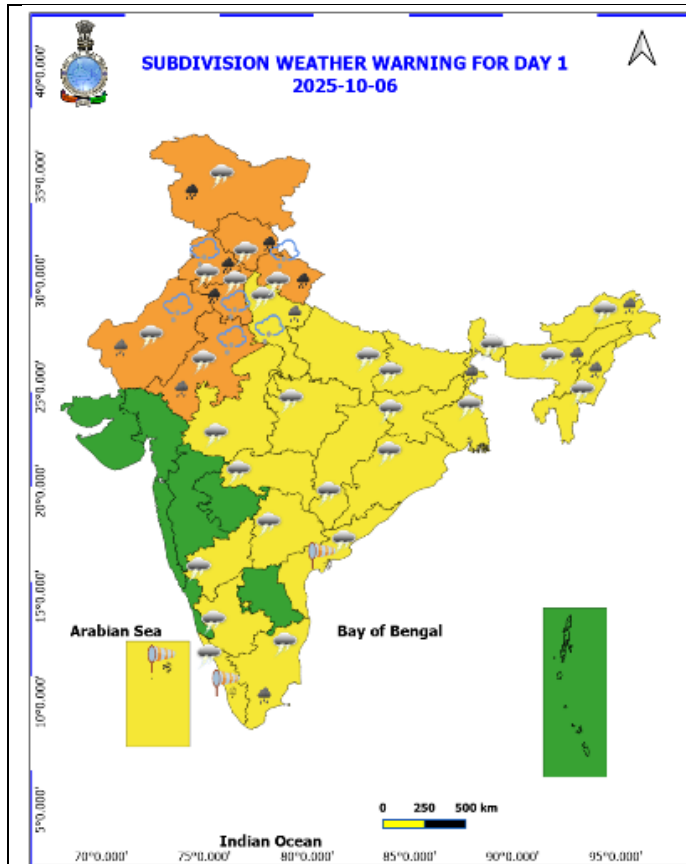
L: LOW PRESSURE AREA
WML: WELL MARKED LOW PRESSURE AREA
D: DEPRESSION (17-27 KT)
DD: DEEP DEPRESSION (28-33 KT)
CS: CYCLONIC STORM (34-47 KT)
SCS: SEVERE CYCLONIC STORM (48-63 KT)
VSCS: VERY SEVERE CYCLONIC STORM (64-89 KT)
ESCS: EXTREMELY SEVERE CYCLONIC STORM (90-119 KT)
SuCS: SUPER CYCLONIC STORM ≥ 120 KT

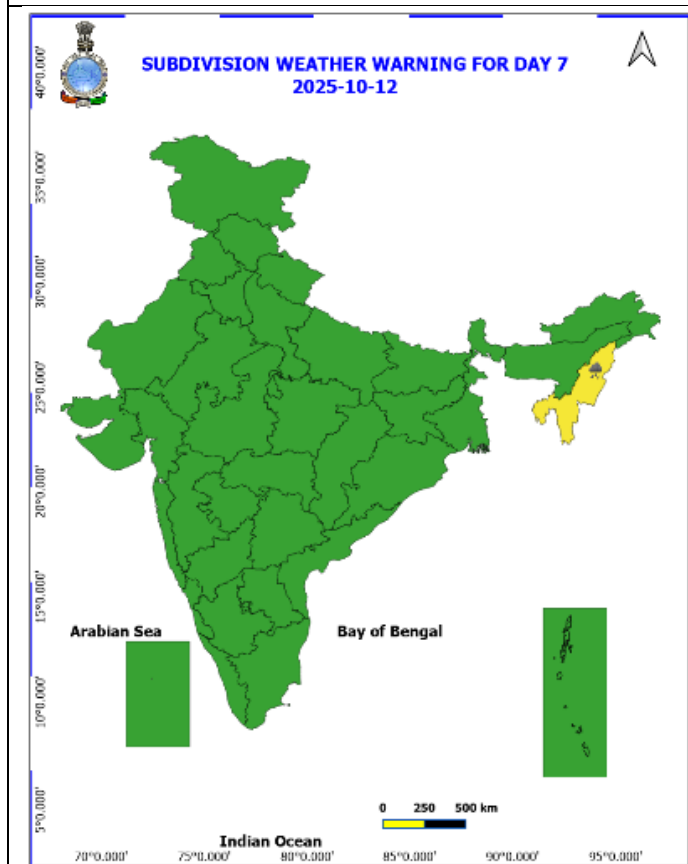
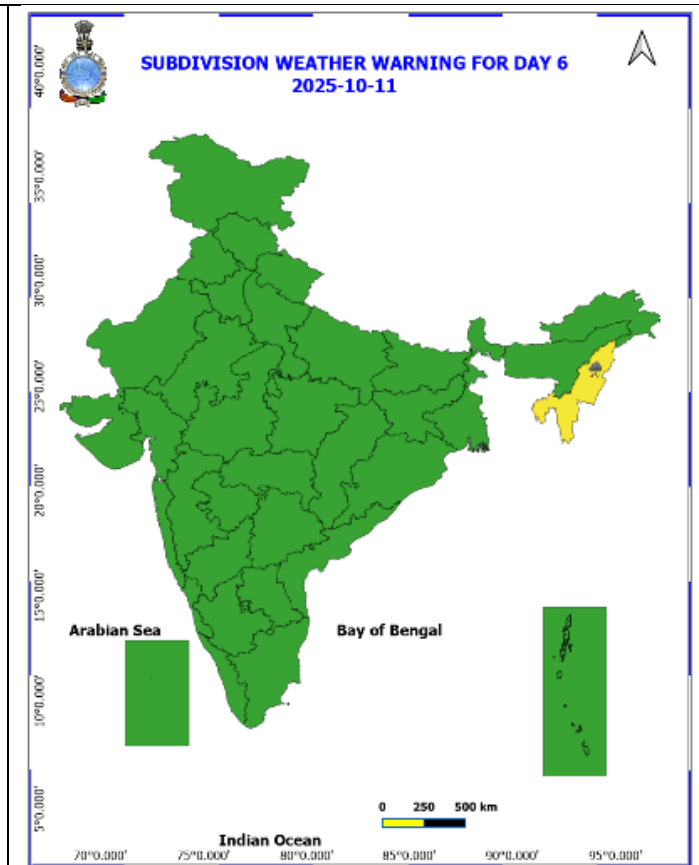
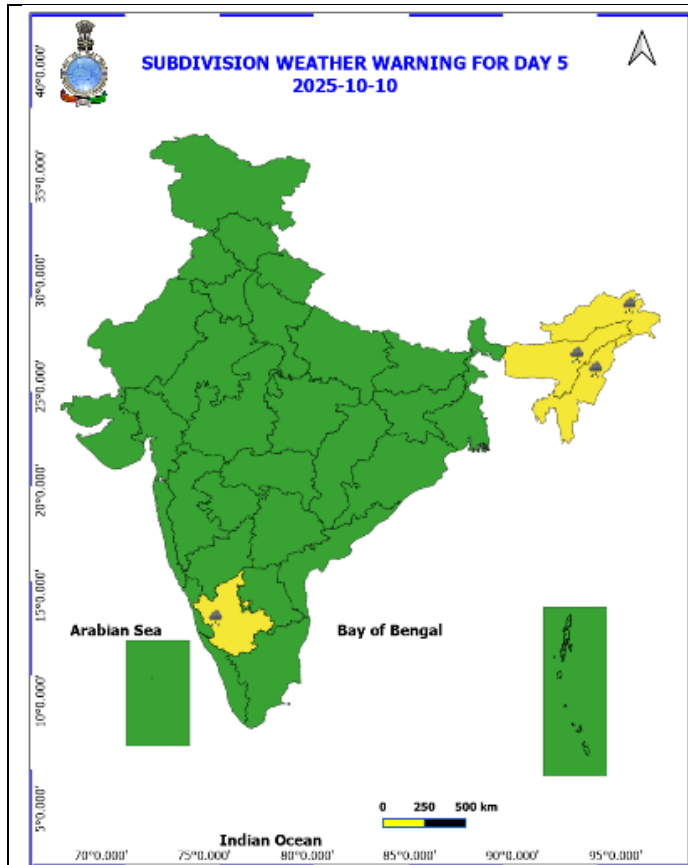
● LESS THAN 34 KT
○ 34.47 KT
○ ≥ 48 KT
— OBSERVED TRACK
— FORECAST TRACK
— CONE OF UNCERTAINTY
AREA OF MAXIMUM SUSTAINED WIND SPEED:
■ 28-33 KT (52-61 KMPH)
■ 34-49 KT (62-91 KMPH)
■ 50-63 KT (92-117 KMPH)
■ ≥ 64 KT (≥ 118 KMPH)

IMPACT OVER THE SEA


MSW (knot/kmph)	Impact	Action
28-33 (52-61)	Very rough seas	Total suspension of fishing operations
34-49 (62-91)	High to very high seas	Total suspension of fishing operations
50-63 (92-117)	Very high seas	Total suspension of fishing operations
≥ 64 (≥ 118)	Phenomenal	Total suspension of fishing operations


Weather Warning Graphics








Legends


Fog


Heavy Rain


Very Heavy Rain


Extremely Heavy Rain


Thunder & Lightning


Hailstorm


Dust Raising Winds


Heavy Snow


Dust Storm


Heat Wave


Warm Night


Hot Day

Hot & Humid

Strong Surface Winds

Cold Wave

Cold Day

Ground Frost

COLOUR CODED WARNING

No Warning (No Action)

Watch (Be Aware)

Alert (Be Prepared To Take Action)

Warning (Take Action)

Probabilistic Forecast

Terms	Probability of Occurrence (%)
Unlikely	< 25
Likely	25 - 50
Very Likely	50 - 75
Most Likely	> 75

* Red colour warning does not mean "Red Alert". Red colour warning means "Take Action".
Forecast and Warning for any day is valid from 0830 hours IST of day till 0830 hours IST of next day.
For more details, kindly visit <https://metsam.ind.gov.in> or contact: 011-2434-4599
(Service to the Nation since 1875)

Fishermen Warning Graphics

